

FASSI



FASSI CARGO CRANE

Data Sheet - Model: XR714

CRANE CAPACITY

7.100 kg at 1,8 m

CONTROL POSITION

Top seat or ground control

BOOM

Four-section telescopic booms of hexagonal box construction

Retracted length:	4,47 m
Extended length:	13 m
Extension speed:	8,55 m / 19 sec
Retraction speed:	8,55 m / 22 sec
Elevation speed:	1 to 76° = 14 sec

WINCH

Hydraulic motor drive with mechanical brake and overwind device

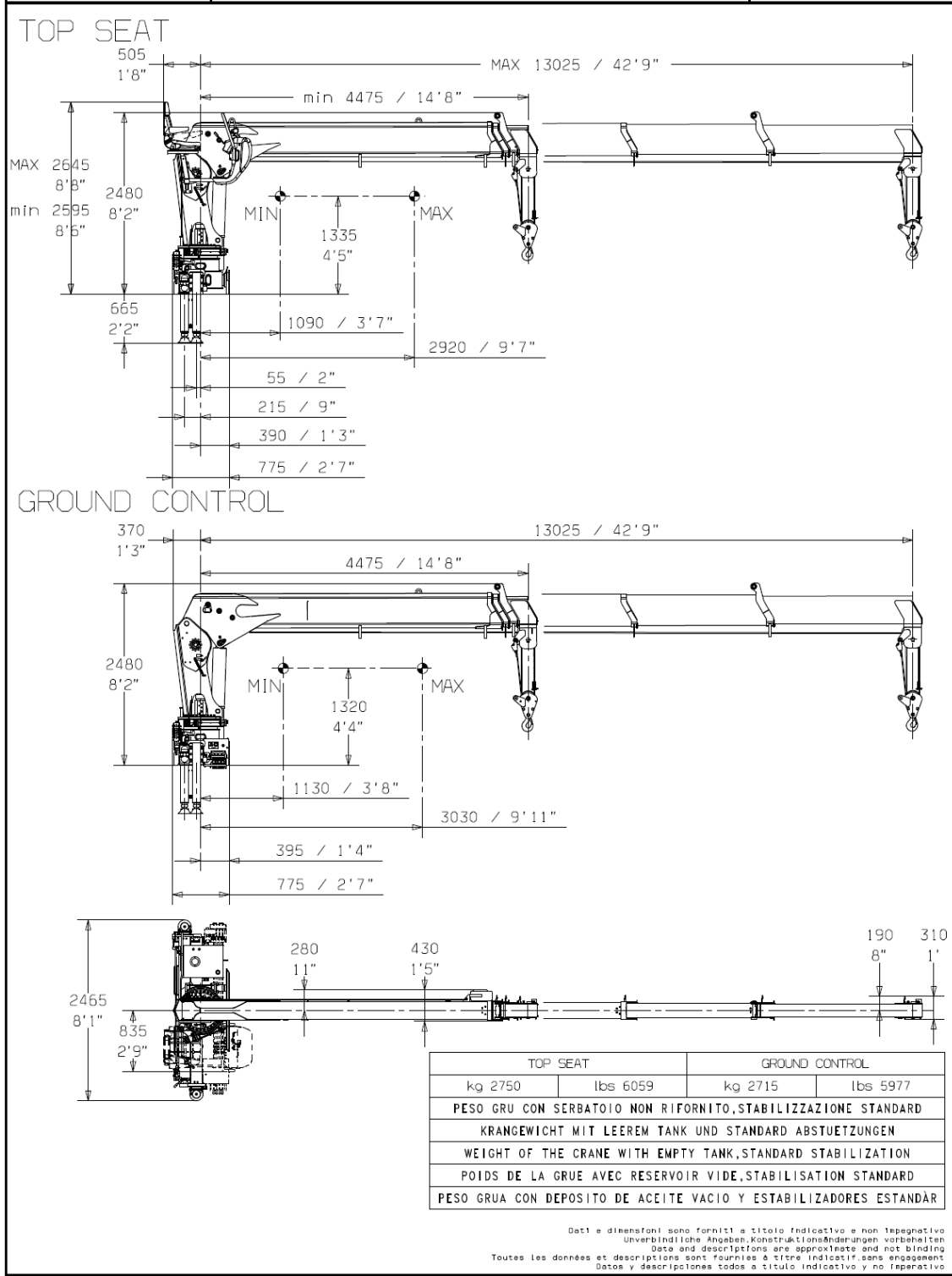
Max single pull single block:	1.200 kgf (11,76 kN)
Single speed:	1,1 sec per meter

WIRE ROPE

Diameter x length:	10 mm x 100 m
Breaking strength:	64.3 kN
Construction:	19x7

CRANE DIMENSIONS

FASSI	XR714	ST0710XR/G3.01.00
Informazioni tecniche Technische Information Technical information Information technique Información técnica	PESI, DIMENSIONI E POSIZIONE BARICENTRO GEWICHTE, ABMESSUNG UND POSITION DES KRANSCHWERPUNKTES WEIGHT, DIMENSIONS AND BARYCENTRE POSITION POIDS, DIMENSIONS ET POSITION DU BARYCENTRE PESO, DIMENSIONES Y CENTRO GRAVEDAD	Pag. Seite Seite Page Page Hoja 01 Data Ausgabe Edition 26/05/2020 Edition Fecha



SUITABLE TRUCK GVW

16.000 to 32.000 kg

SLEWING

Worm gear 360° continuous rotation on ball slew ring

Slewing speed: 6,5°/ sec

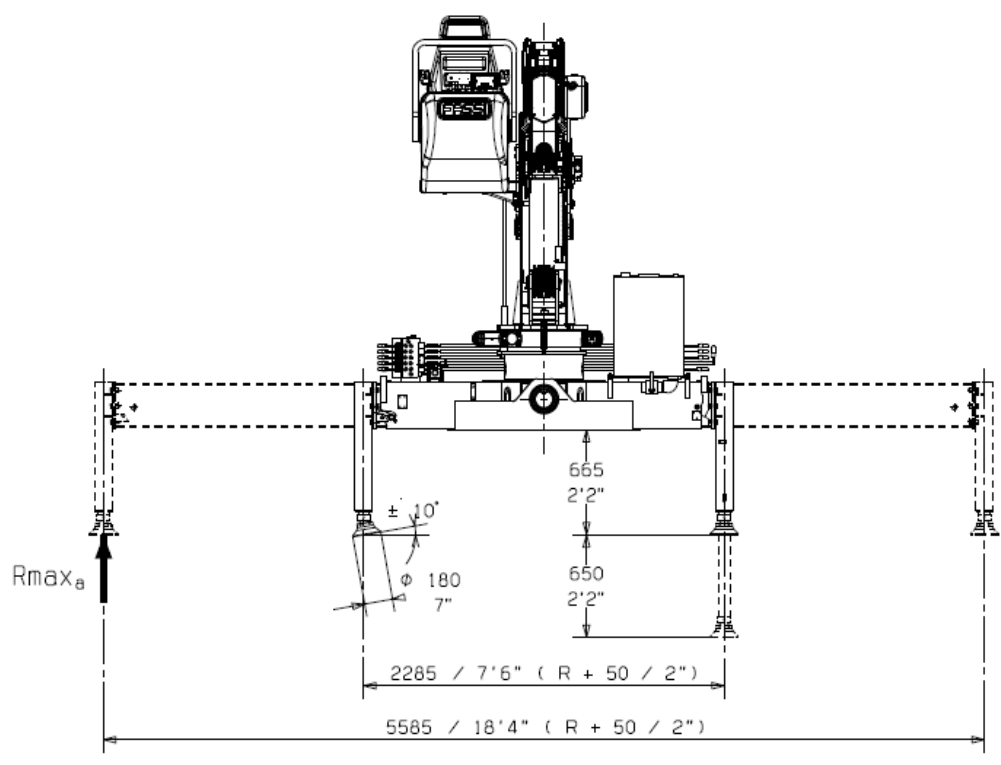
OUTRIGGERS

Hydraulically extendable integrated in the frame base, optionally 180° tiltable

Minimum extension: 2.285 mm

Maximum extension: 5.585 mm

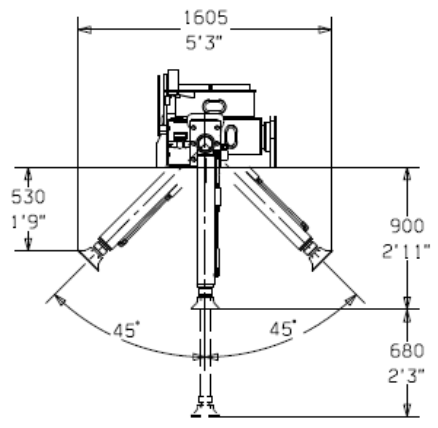
FASSI Informazioni tecniche Technische Information Technical information Information technique Información técnica	<h1>XR710</h1>	ST0710XR/G3.05.00
	PESI, VERSIONI ESTENSIONI E STABILIZZATORI GEWICHTE, ABSTÜTZUNGS-UND STÜTZBEINEAUSFÜHRUNG WEIGHTS, VERSIONS OF EXTENSIONS AND OUTRIGGERS POIDS, VERSIONS DES EXTENSIONS ET DES STABILISATEURS PESOS, VERSIONES DE LAS EXTENSIONES Y DE LOS ESTABILIZADORES	Pag. Seite Page Page Hoja Hoja 05



R	+22	+49

R_{max_a}	DaN	lbf
	8113	18238

R



Dati e dimensioni sono forniti a titolo indicativo e non impegnativo
 Unverbindliche Angaben. Konstruktionsänderungen vorbehalten
 Data and descriptions are approximate and not binding
 Toutes les données et descriptions sont fournies à titre indicatif sans engagement
 Datos y descripciones todos a título indicativo y no imperativo

HYDRAULICS

Maximum working pressure:	230 bar
Suggested pump oil flow:	60 l/min
Oil tank capacity:	130 l with level gauge and filter indicator
Control valve:	multiple functions control valve with safety valve

SAFETY DEVICES

FX200 load limiter

90% and 100% visual indicator

Warning Buzzer

Over-winding alarm

Hydraulic safety valves, check valves and holding valves

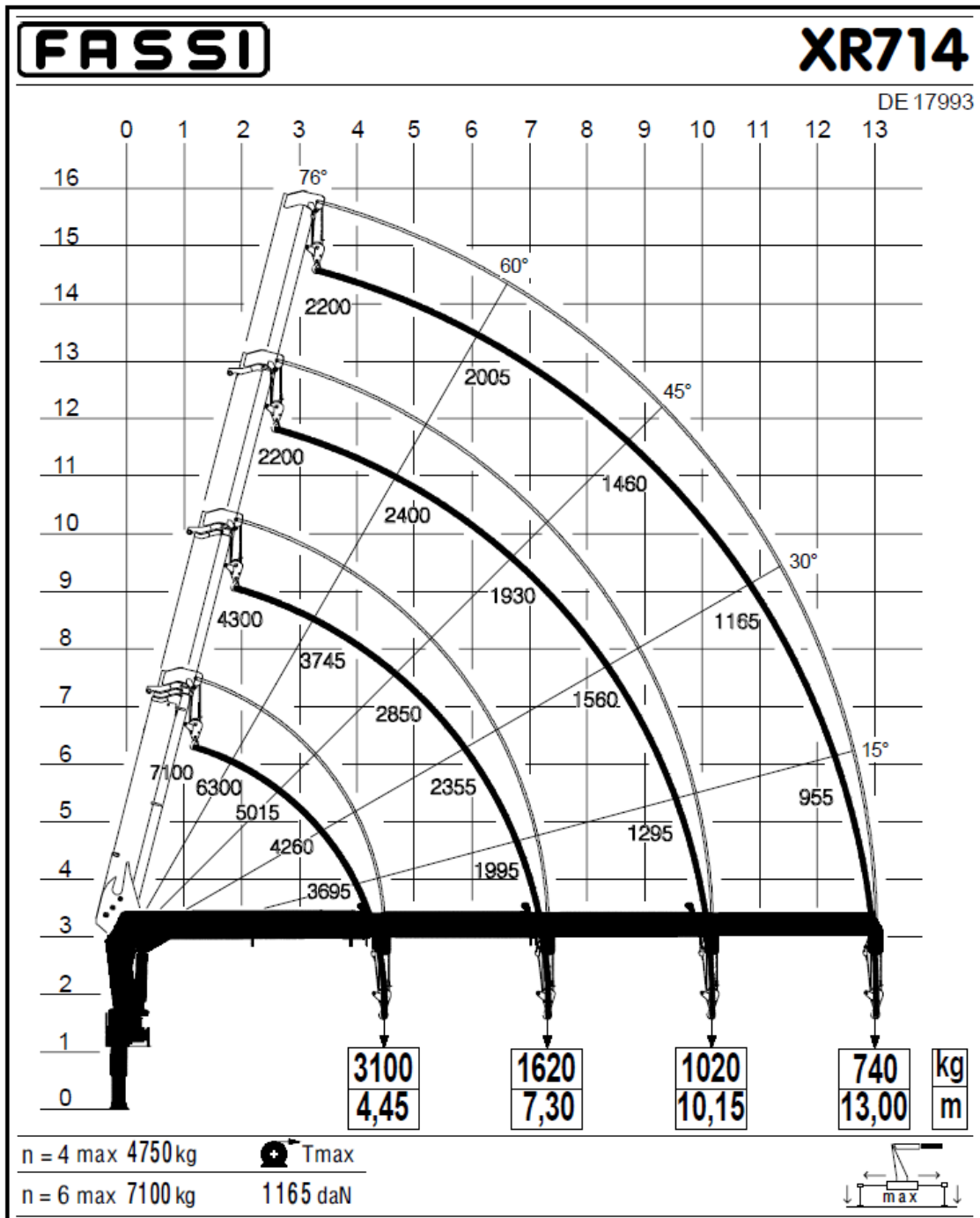
Level crane gauge

CRANE MASS


(including stabilizers)

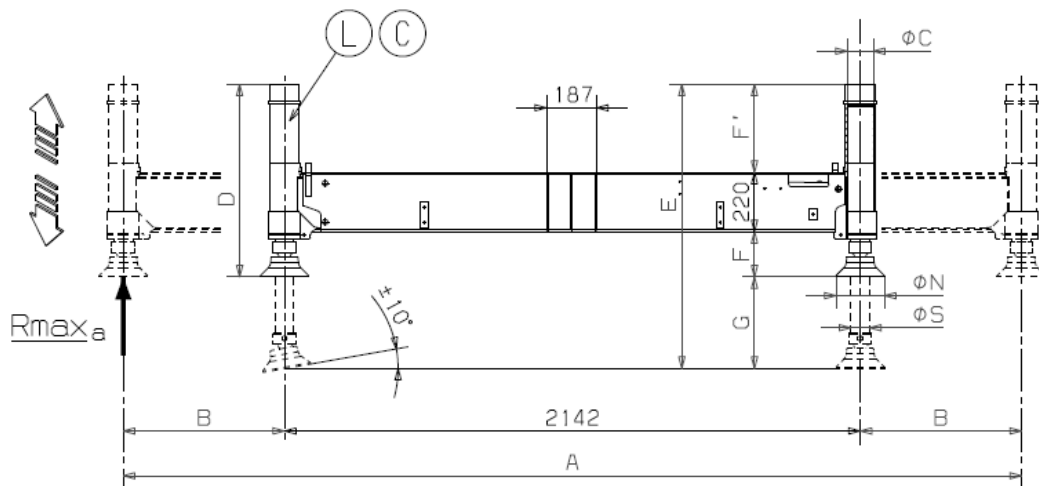
Ground control version:	2.715 kg
Top seat control version:	2.750 kg

LOAD CHART CAPACITY



SUPPLEMENTARY STABILIZERS (optional):

	TRAVESE SUPPLEMENTARI 290800HE	ST0290HE/T3.01.03
	Informazioni tecniche Technische Information Technical information Information technique Información técnica	PESI, VERSIONI E ABBINAMENTI GEWICHTE, AUSFÜHRUNGEN UND VERBINDUNGEN WEIGHTS, VERSIONS AND COMBINATIONS POIDS, VERSIONS ET JUMELAGES PESOS, VERSIONES Y COMBINACIONES



	A	B	D	E	F'	F	G	ØC	ØS	ØN	kg	
Ⓐ	192105L	4142	1000	943	1493	108/554	615/169	550	97	70	180	340
Ⓑ	192104C	"	"	717	1057	108/328	389/169	340	"	"	"	320

290800HE					
Rmax _a =5710 daN					
Gru	Tpmin	Gru	Tpmin	Gru	Tpmin
F110B.0-F120B.0	3000	F110B.1-F120B.1	3000	F125A.1	3000
F110B.2-F120B.2	3000	F125A.2	3000	F135A.0	3000
F135A.2	3000	F155A.0-F165A.0	3200	F155A.2-F165A.2-F185A.2	3200
F175A.0	3500	F175A.2	3500	F195A.0	3850
F195A.2	3850	F215A.0-F235A.0	3850	F215A.2-F235A.2	4000
F245A.0-F275A.0	4000	F245A.2-F275A.2	4000	F295A.2-F315A.2	4200
F295RA.2-F315RA.2	4200				

Tpmin - DISTANZA MINIMA TRA CENTRO COLONNA E TRAVESE SUPPLEMENTARE
 Tpmin - MINDESTABSTAND ZWISCHEN MITTELPUNKT DER SÄULE UND ZUSATZABSTÖTZTRÄGER
 Tpmin - MINIMUM DISTANCE BETWEEN CRANE COLUMN CENTRE AND SUPPLEMENTARY OUTRIGGERS
 Tpmin - DISTANCE MINIMUM ENTRE LE CENTRE COLONNE GRUE ET LA TRAVESE SUPPLEMENTAIRE
 Tpmin - DISTANCIA MINIMA ENTRE EL CENTRO COLUMNA DE LA GRUA Y LOS ESTABILIZADORES SUPLEMENTARIOS

Dati e dimensioni sono forniti a titolo indicativo e non impegnativo
 Unverbindliche Angaben, Konstruktionsänderungen vorbehalten
 Data and descriptions are approximate and not binding
 Toutes les données et descriptions sont fournies à titre indicatif, sans engagement
 Datos y descripciones todos a título indicativo y no imperativo

Fassi Gru S.p.A.

Via Roma n.110 – 24021
Albino (BG) ITALY



+39 035 776400



fassi@fassi.com

FASSI