

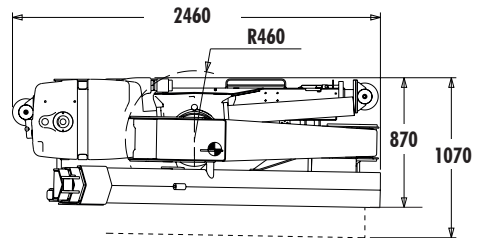
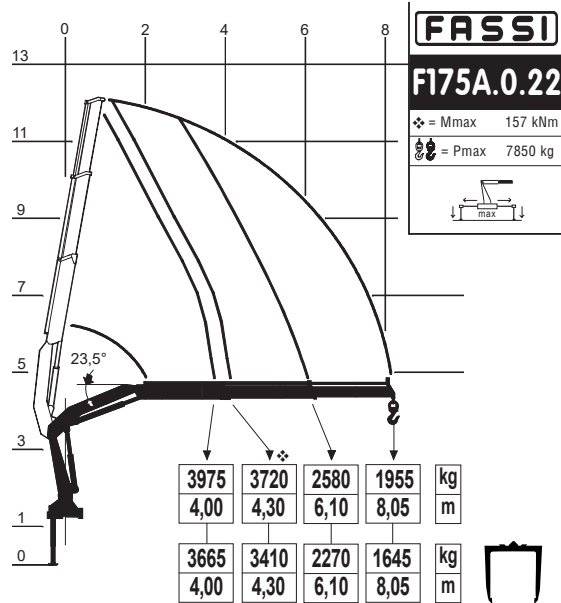
F175A.0.22 BLOCK CRANE

F175A.0.22 BLOCK CRANE



LEADER **IN** INNOVATION

TECHNICAL DATA



FASSI F175.0.22 with BLOCK CLAMP KM332-HD1300 (KINSHOFER)

Rear installation of Fassi F175A.0.22 equipped with block clamp.

The crane is equipped with a top seat, a special oil tank in iron and supplementary function for accessories. Ideal installation for handling pallets of building blocks.

FASSI BLOCKS CRANE

ACCESSORIES



TOP SEAT - work in comfort

An ergonomic seat in a position of safety allows the operator complete control when executing specific manoeuvres and lifting operations. The seat is completely adjustable to accommodate to the most comfortable working position for the operator.



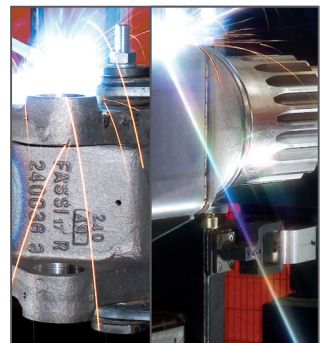
SUPPLEMENTARY FUNCTIONS

Supplementary functions for the use of hydraulic accessories on the crane, protected by an exclusive Fassi system consisting of metal trays paired with highly resistant nylon guide-chains. High quality hoses resistant to the ozone action.



ROTATION

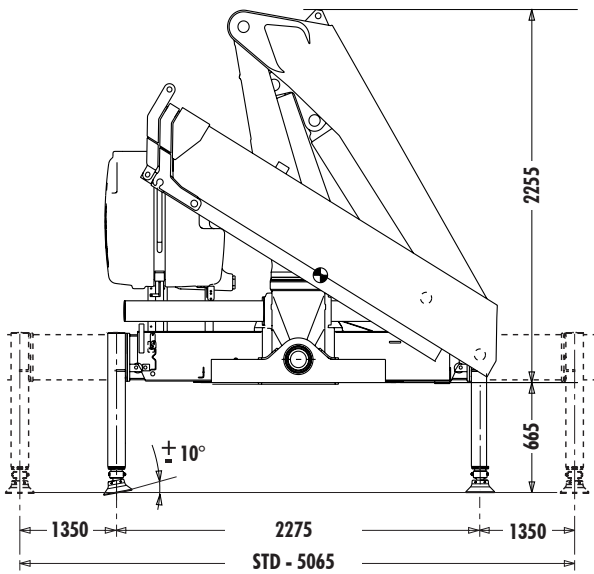
Rack rotation with self-centring cast iron wear pad: it ensures the correct and constant coupling between the pinion and the rack, avoiding the wear and tear of the teeth.



CAST QUALITY

Cast components with high mechanical characteristics for various important structural components, such as the bottom section (pinion) and the head of the column, the column support, the heads of the ram rods and the cylinder bottoms: less weldings, higher performance to fatigue cycles.

TECHNICAL DATA



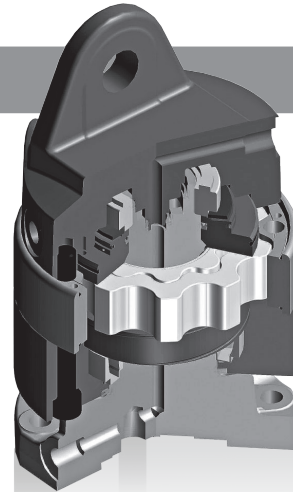
F175A.0.22 TECHNICAL DATA

Lifting capacity	16,00 tm
Standard reach	8,30 m
Hydraulic extension	3,75 m
Rotation arc	400°
Rotation torque	27,3 kNm
Working pressure	29,5 MPa
Pump capacity	40 l/min
Weight	2145 kg

EQUIPMENT product features

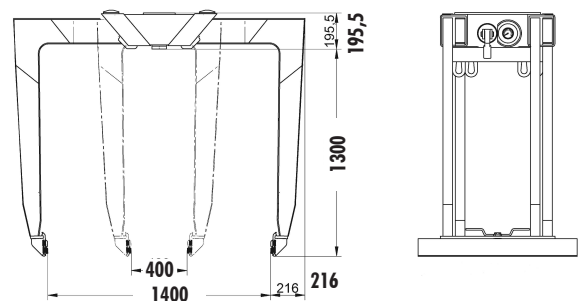
HIGH EFFICIENCY ROTATOR

High efficiency, long lasting rotators, specially tailored to meet your requirements with rotator head of heavy duty block clamp.



HD BLOCK CLAMP - HEAVY DUTY BLOCK CLAMP

The technically unique KM 332 block stack grapple is a versatile tool for palletized and non-palletized materials.



KM332-HD1300 TECHNICAL DATA

Capacity	2500 kg
Weight	310 kg

Lifting Tomorrow



LEADER IN INNOVATION



Data and descriptions are approximate and not binding
Realized by Fassi Gru S.p.A. © 2018 - all right reserved -

Reproduction in whole or in part of texts and pictures published on this site on magnetic storage media, digital storage media etc. is prohibited

F1775

FASS